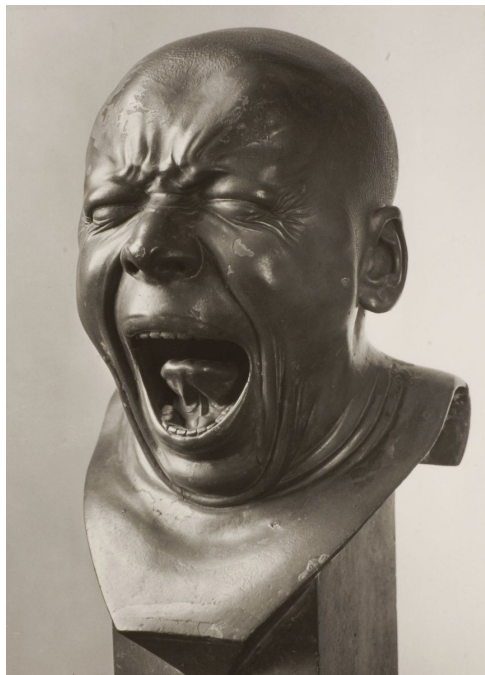


Day One: SKETCH

Pick your favorite character head to draw from these three.

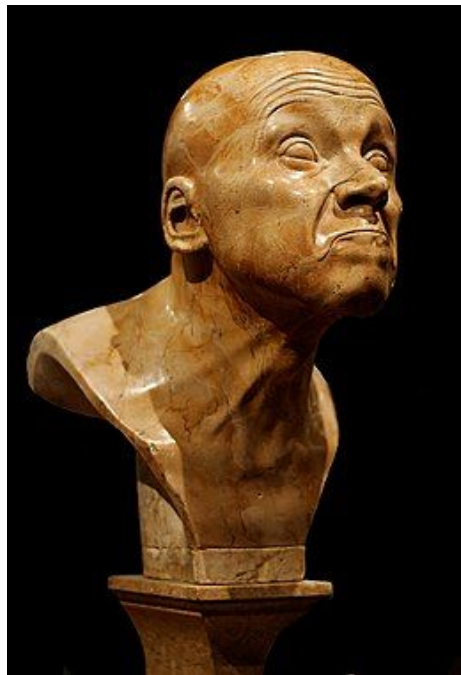
Franz Messerschmidt, *Character Heads*, 1770-1783



The Yawner



The Vexed Man



The Last Degree of Innocence

Day Two: ANALYZE

Copy this definition.

Expression and Mood:

The emotional response a person has when viewing a piece of art, which can include emotions such as joy, love, heartbreak, anguish, anger, disgust, or anxiety.

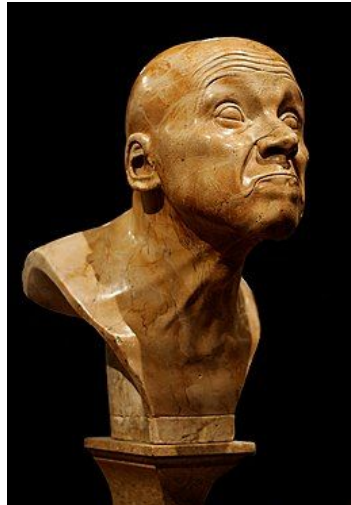
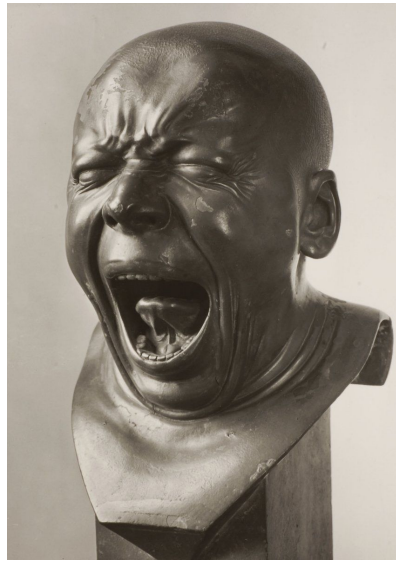


Day Three: INTERPRET

What mood did Franz Messerschmidt create with the Character Head you selected?

How do you feel when looking at it?

How do you think the “character” feels in this moment?



Day Four: EVALUATE

1. What are the most successful elements of this artwork?
2. What are the weakest elements of this artwork?
3. Overall, I like/dislike this artwork because:

