

Day One: SKETCH



Lucian Freud, *Grey Gelding*, 2003



Day Two: ANALYZE

In two complete sentences,

1. Describe where the artists uses tints.

2. Describe where the artist uses shades.



Day Three: INTERPRET

Write down **one question**
(*complete sentence*) that
you have about this horse
painting.



Day Four: EVALUATE



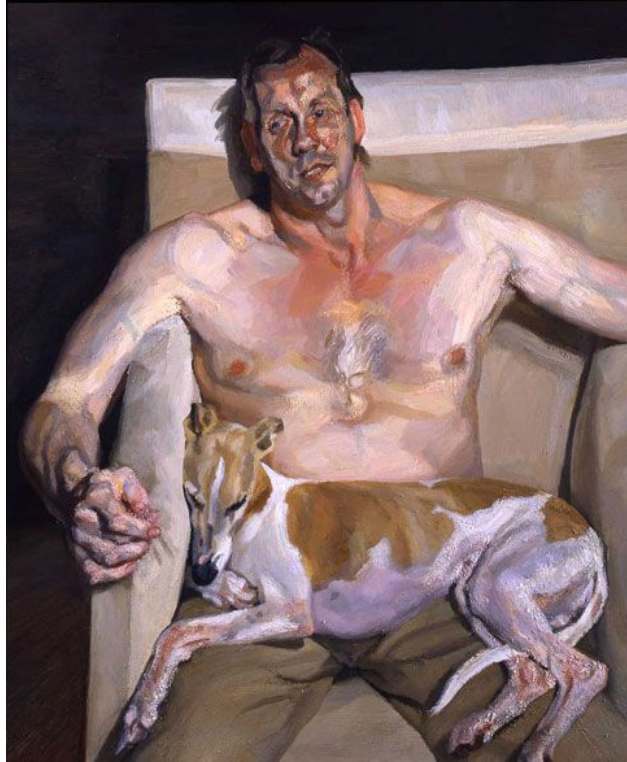
_____ is a better artwork because_____.

Day Four: EVALUATE

1. What are the most successful elements of this artwork?
2. What are the weakest elements of this artwork?
3. Overall, I like/dislike this artwork because:



Lucian Freud



Lucian Freud

