

# Day One: SKETCH

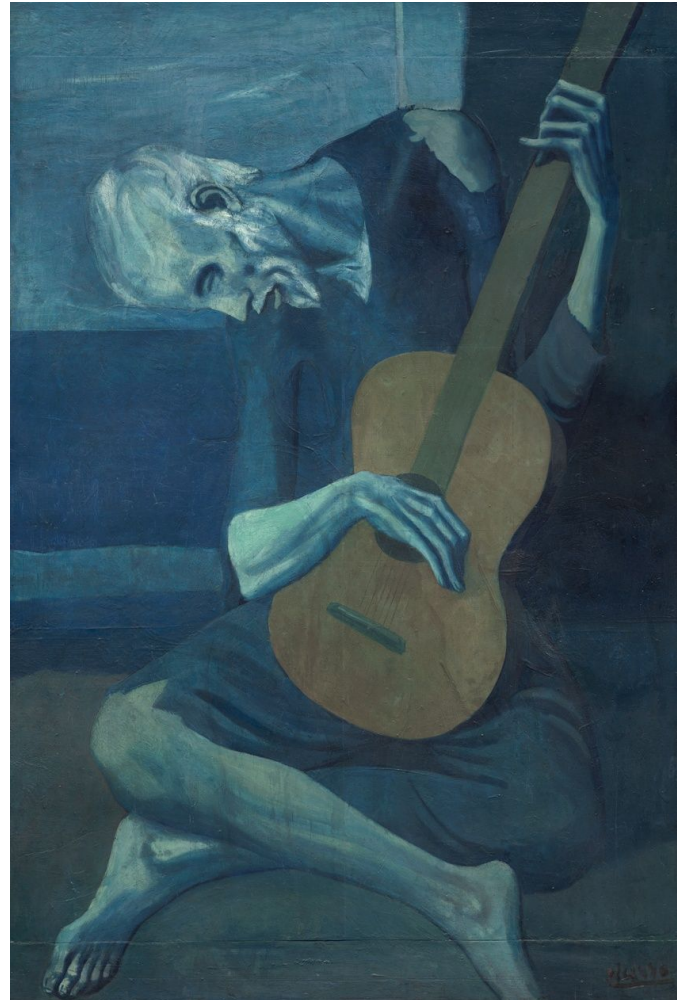


Pablo Picasso, *The Old Guitarist*, 1903-1904

# Day Two: ANALYZE

Copy BOTH definitions

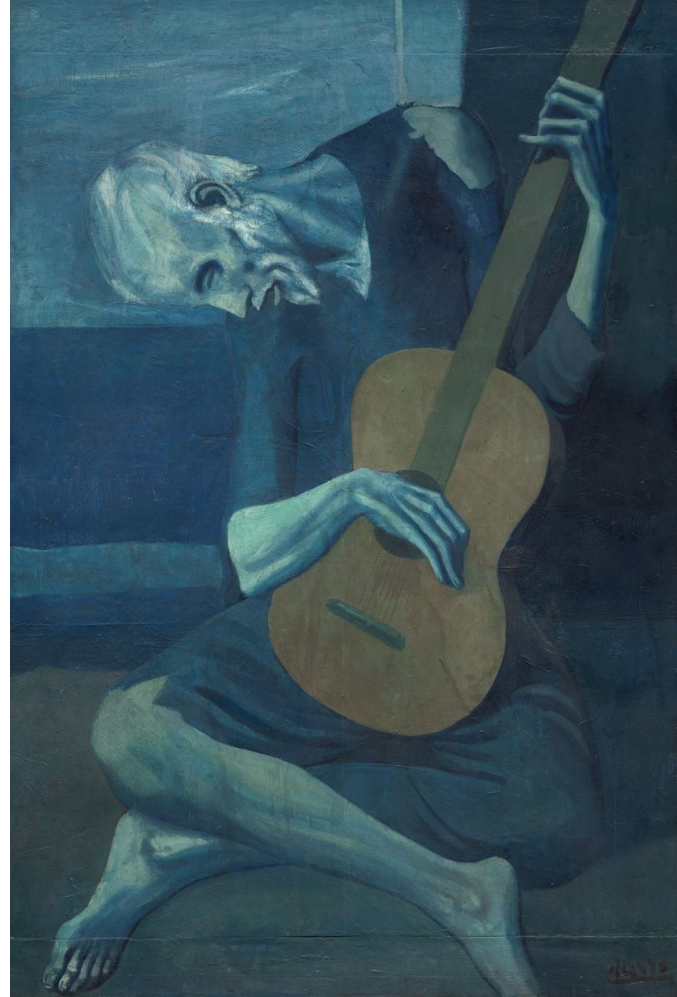
1. Tint: a base color mixed with white
2. Shade: a base color mixed with black



# Day Three: INTERPRET

What is the story, message or theme of this artwork?

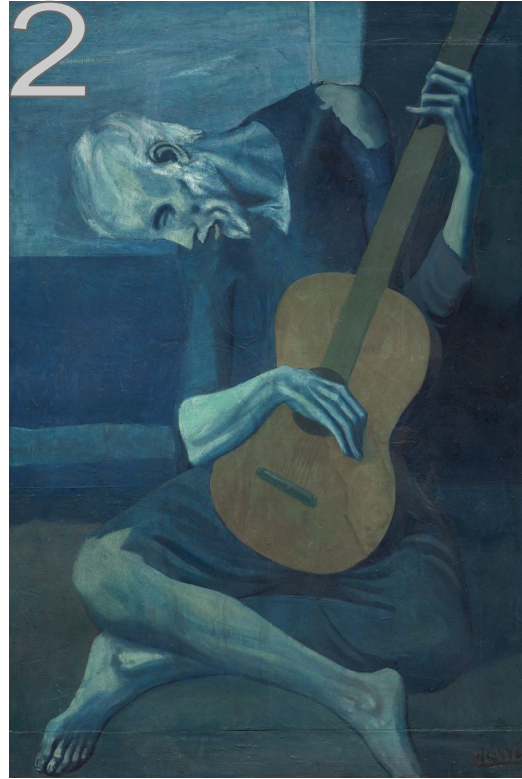
Who is the old man holding the guitar?





# Day Four: EVALUATE

\_\_\_\_\_ is better because \_\_\_\_\_



# Artist Information:

[https://www.artic.edu/artworks/  
28067/the-old-guitarist](https://www.artic.edu/artworks/28067/the-old-guitarist)

