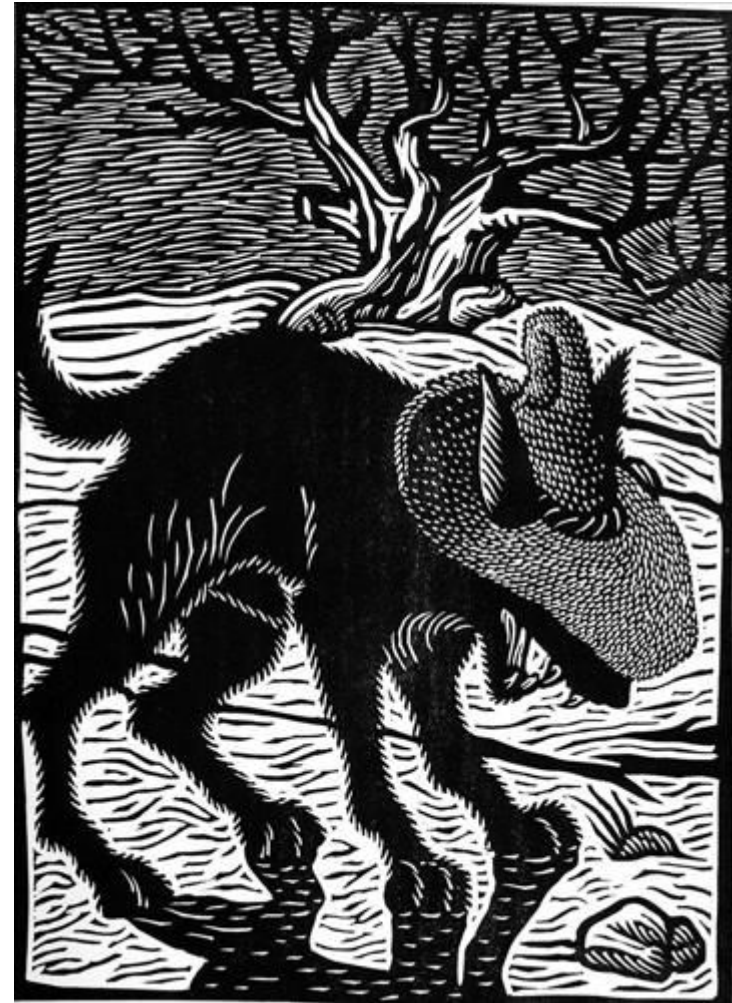


Day One: SKETCH

Get out your Chromebook for sketching



**Shade all
areas black
with your
pencil.**



Sergio Sanchez Santamaria, Coyote 2012

Day Two: ANALYZE

Pick one area of the artwork. (ex: the tree)

How does Sergio Sanchez Santamaria organize his **dark and light areas** using **line**?



Day Two: INTERPRET

If you could ask Sergio Sanchez Santamaria one question to better understand the meaning behind this artwork, what would you ask?

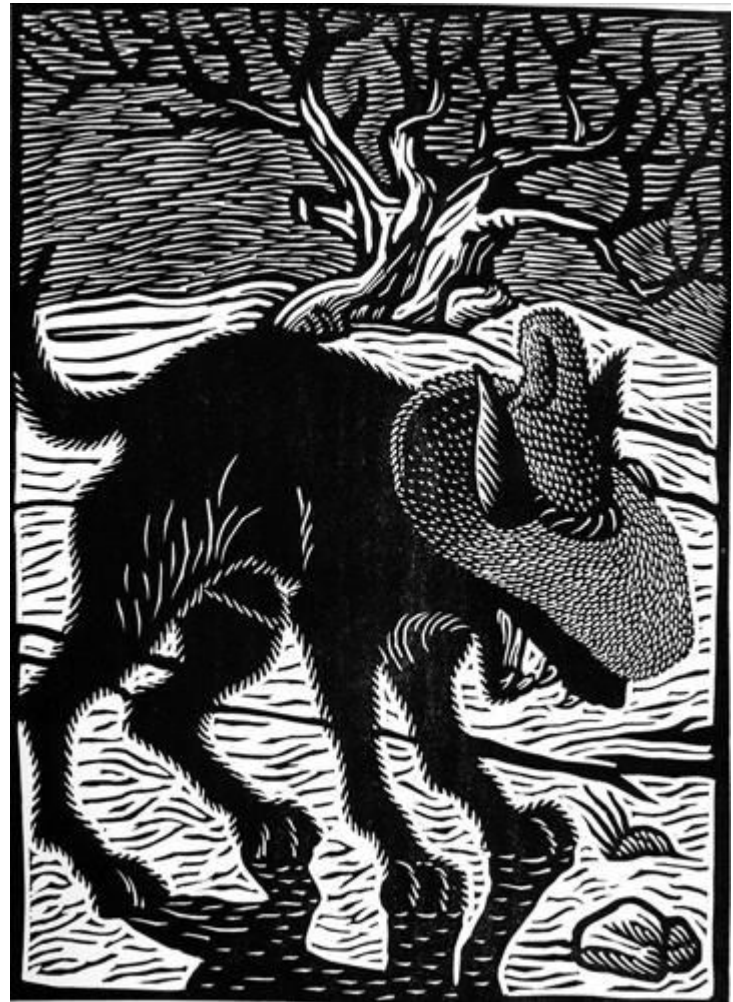


Day Four: EVALUATE

Using your Chromebook, look at all the Sergio Sanchez Santamaria prints from slides 6-16.

Pick one that you like better than Coyote.

In your opinion, why is it a better print?

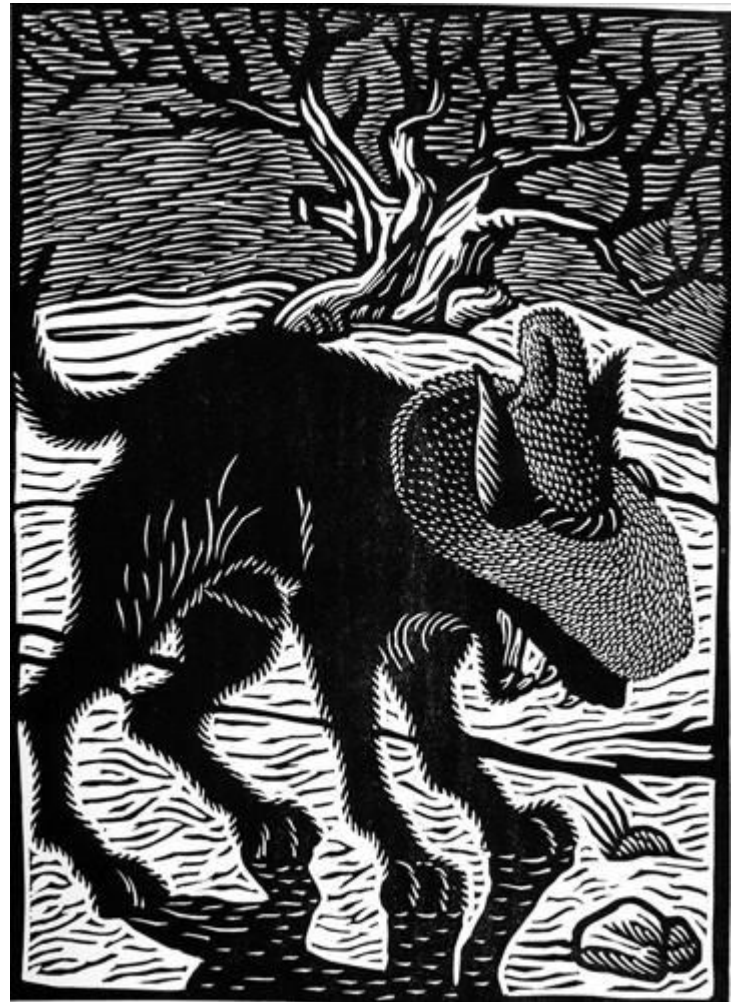


Day Four: EVALUATE

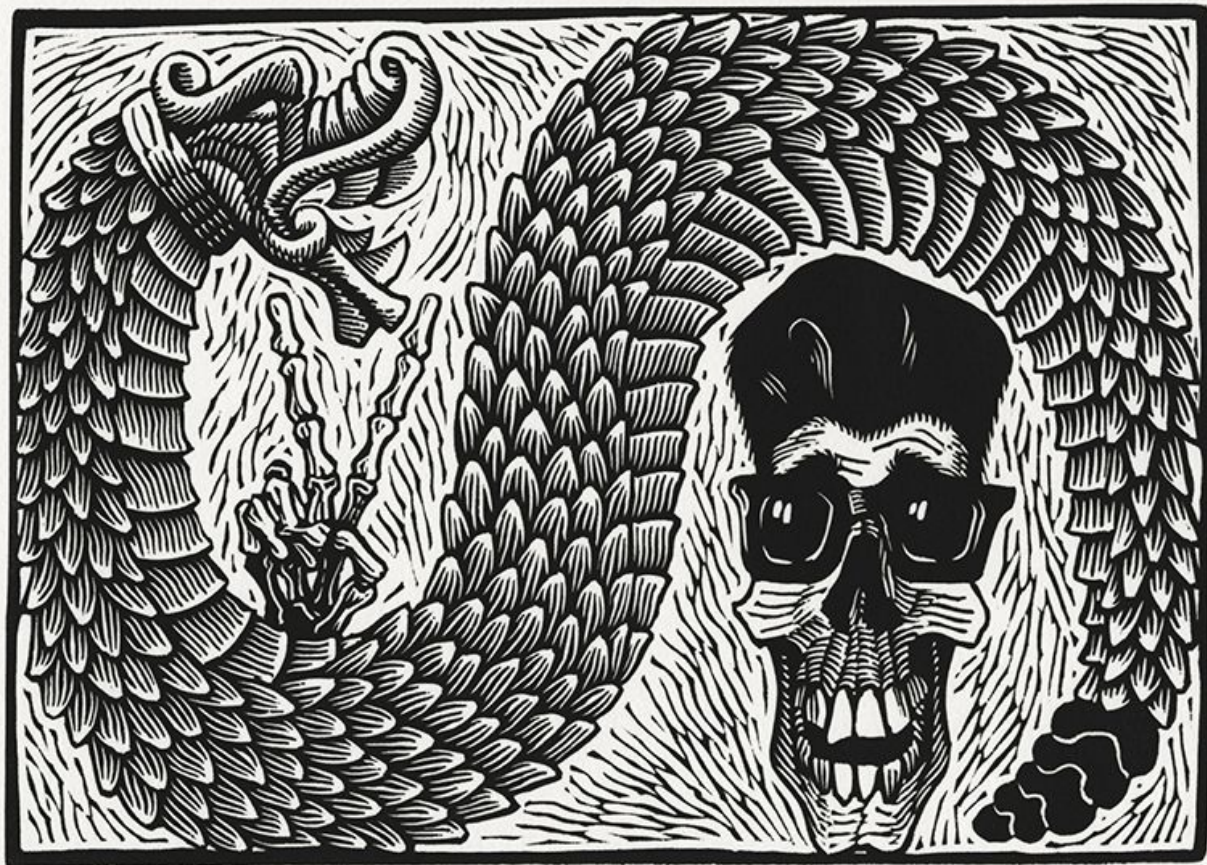
Using your Chromebook, look at all the Sergio Sanchez Santamaria prints from slides 6-16.

Pick one that you like better than Coyote.

In your opinion, why is it a better print?







4/50

"Quetzalcoatl"

Sanctuary
2012







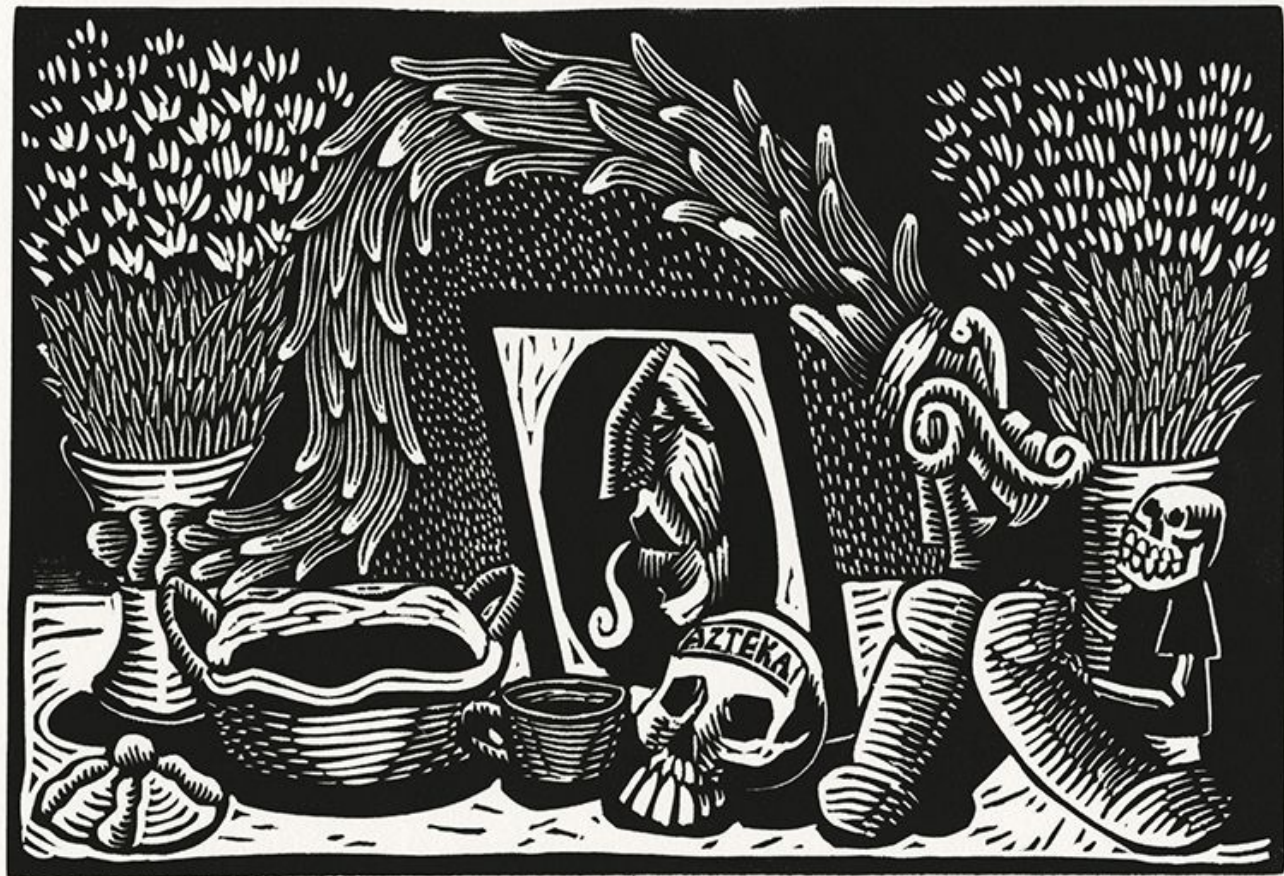
25/39

Santmon



18/32

2021



4/50

"Oprenda Azteka"

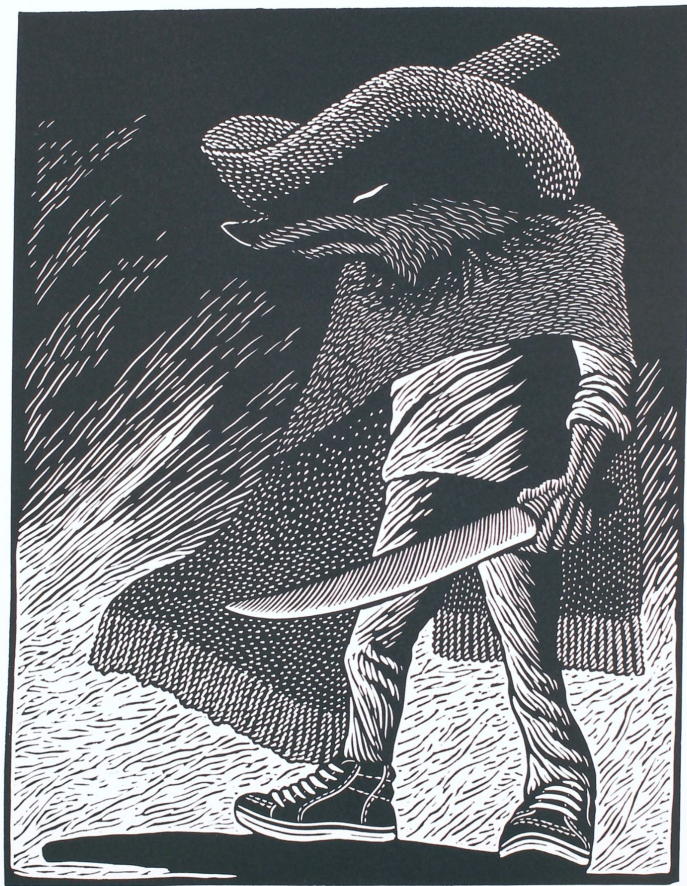
Jan 2012



4/50

"La pesadilla"

Santamaria
2012



18/32

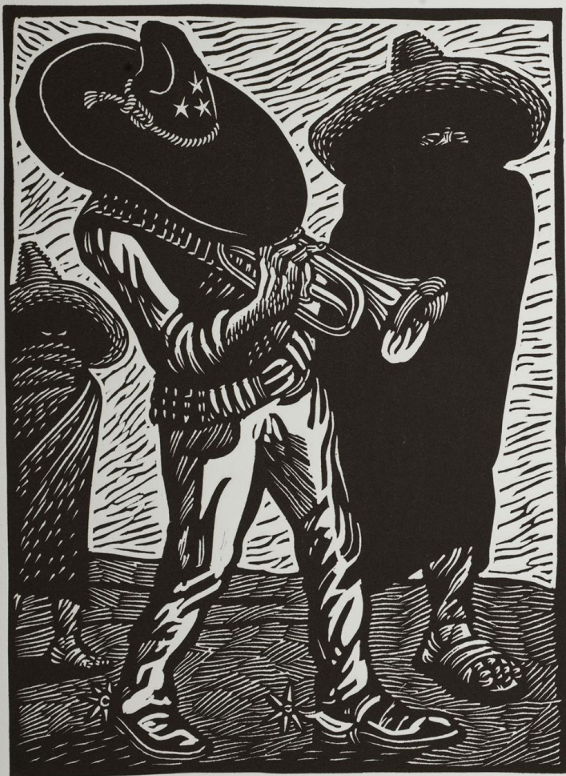
2021



11/15

"Chinelos"
Tepoztlán

Jonathan



14/15 "Coronel Cristino Santamaría" Santamaría
Tlayacapan

